

UF-760AG Specifications				
Display Unit		15" active matrix LCD flat monitor		
Scanning Methods		Electronic Phased array / Convex array / Linear array / 3D&4D		
Beam Former		Digital, Multi-Beam Processing		
Frame Rate		More than 200 fps in B-mode (transducer and application dependent); max 40 fps in CFM (depth, angle and clinical application dependent) and max 20 volume/s in 4D		
B-Mode	Operation Mode		Spatial and Frequency Compound (option)	
			Trapezoidal Imaging (option)	
	Focus Method		Transmitting : 1 step (8 types selectable)	
			Receiving : continuous dynamic focus	
	Display Depth		2 ~ 30 cm (depending on probe)	
	Frequency		2 types selectable and AFA (Automatic Frequency Adjustment)	
	Tissue Harmonic Imaging		on/off, 2 types frequency selectable (depending on probe)	
	Color Scale Imaging		8 types B color selection	
Display Control		up/down, right/left, view angle variable (depending on probe)		
M-Mode	Display Mode		Moving Bar	
	Sweep Speed		4 steps (2 to 8 sec/screen)	
	Color Scale Imaging		8 types M color selection	
PW-Mode	Display Mode		PWD mode, High PRF mode	
			Spectral Doppler Tissue Imaging (option)	
	Sweep Speed		4 steps (2 to 8 sec/screen)	
	Velocity Range		± 500Hz to ±24KHz (transducer and application dependent)	
CFM Mode	Display Mode		Velocity mode, Directional Power mode, Velocity Power mode	
			Doppler Tissue Imaging (option)	
	Velocity Range		± 250Hz to ±24KHz (transducer and application dependent)	
	Color Map		Velocity: 4 types, Power: 4 types, DTI: 4 types	
CW Mode (Option)	Display Method		CWD mode	
	Sweep Speed		4 steps	
	Velocity Range		± 1KHz to ±48KHz (transducer and application dependent)	
Imaging Control	Gain		60 ~ 100 dB, 32 steps	
	STC		8 sliders	
	Dynamic Range		48 ~ 96 dB, 8 steps	
	Echo Enhance		8 Steps	
	Smooth		8 Steps	
	Post Processing		8 Steps	
	Line Density		2 Steps	
	ECG synchronized acquisition		Dual Time	
Probe Connection		2 Active Connectors		
Biological Signal		ECG (Option)		
Measurements and Calculations		General; Cardiology; Vascular; Urology; OB/GYN; Report Function		
Patient Archiving		Integrated PACS; Modality Worklist; Long Term Archiving; Backup		
Image Filing		600 frames (Cine Memory (max 3000 frames with Long Cine option) USB Memory; 160 GB HDD; External DVD		
Network		LAN		
		DICOM (option)		
General	Power		100-120/200-240 ±10%; 50-60Hz	
	Power Consumption		150VA	
	External Dimensions		367(W)x364(D)x98(H) mm	
	Weight		6.9 kg	
Options	UF-760AG Trolley	OTR-02	CW Doppler	UF-760AG-CWD
	ECG Unit	UF-760AG-ECG	Cardiac Package	UF-760AG-CPG
	i/o Extension Unit	UF-760AG-IOE	DICOM Store SCU	UF-760AG-SCU
	Battery Pack	UF-760AG-BAT	DICOM MWL	UF-760AG-MWL
	DL-Adapter	UF-760AG-DLA	Stress Echo Package	UF-760AG-STE
	Isolation Transformer	UF-760AG-ISO	Long Cine	UF-760AG-LCL
	Foot switch	OA-293	3D/4D	UF-760AG-4D
	Cable Manager for Trolley	UF-800XTD-CMG	Easy Optimization	UF-760AG-EOP
		Trapezoidal & Compound	UF-760AG-TAC	
Probes	SA16	FUT-SA162-5P	4-9MC	FUT-4-9MC
	3-8PA	FUT-3-8PA	5-12L50	FUT-5-12L50
	CA60	FUT-CA602-5P	LA38	FUT-LA385-12P
	CVA40	FUT-CVA403-6A	TV11	FUT-TVG114-7A

UF-760AG-BR-201104-1.0



39-4, Hongo 3-chome, Bunkyo-ku, Tokyo 113-8483, Japan
Tel: +81-3-5684-1455 Fax: +81-3-3814-1222
www.fukuda.com



A new generation of small ultrasound systems

UF-760AG can do more

Excellent performance
Undeniable image quality
Hypersensitive Pulsed and Continuous Doppler

With less than 7 kg



A high image quality leads to earlier disease detection, more accurate diagnosis and less invasive treatments. In order to ensure patient's premium care, Fukuda Denshi decided to provide to even more physicians, a small and easy to carry device with the best performance of an ultrasound system.

Small system, big innovation

As a result of its small size, light weight and large battery autonomy (more than one hour), UF-760AG can be easily transported, making it the right choice for all point-of-care environments such as emergency rooms, ambulances, domiciliary care or even the sports field.



All these features allow having a complete and efficient system in a very compact size.

Complete and Efficient

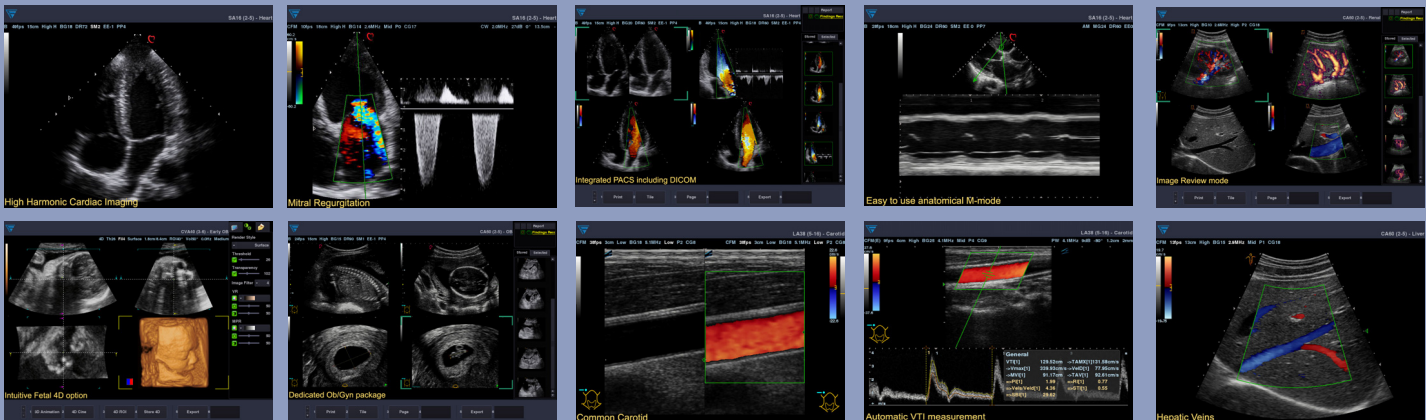
- ✓Intuitive Workflow
- ✓Large Ultrasound Area
- ✓State of the art image quality
- ✓Multi languages
- ✓Full Measurement and Report Package
- ✓Big storage capacity
- ✓Easy image setup through Easy Optim
- ✓i/o Extension Unit



Large Range of Features and Options

- Cardio Package (including Anatomical M-mode) • CW • Stress Echo • Trapezoidal Imaging • EasyOptim • Spatial Compounding • 3D/4D • Long Cine Loop • DICOM MWL, Store SCU

Large Range of Medical Applications






One portable device, two probes

Switch probe, application and setup at a keystroke time. With two active connectors integrated directly on UF-760AG your examinations will be faster, better and more comfortable.



Full Probe Assortment

- | | | | | |
|--|---|--|--|---|
|  Cardiac |  Vascular |  Abdominal |  Small Parts |  Ob/Gyn |
| SA16
3-8PA | LA38
5-12L50
SA16 | CA60
CVA40 | 5-12L50
LA38 | CA60
CVA40
TV11 |